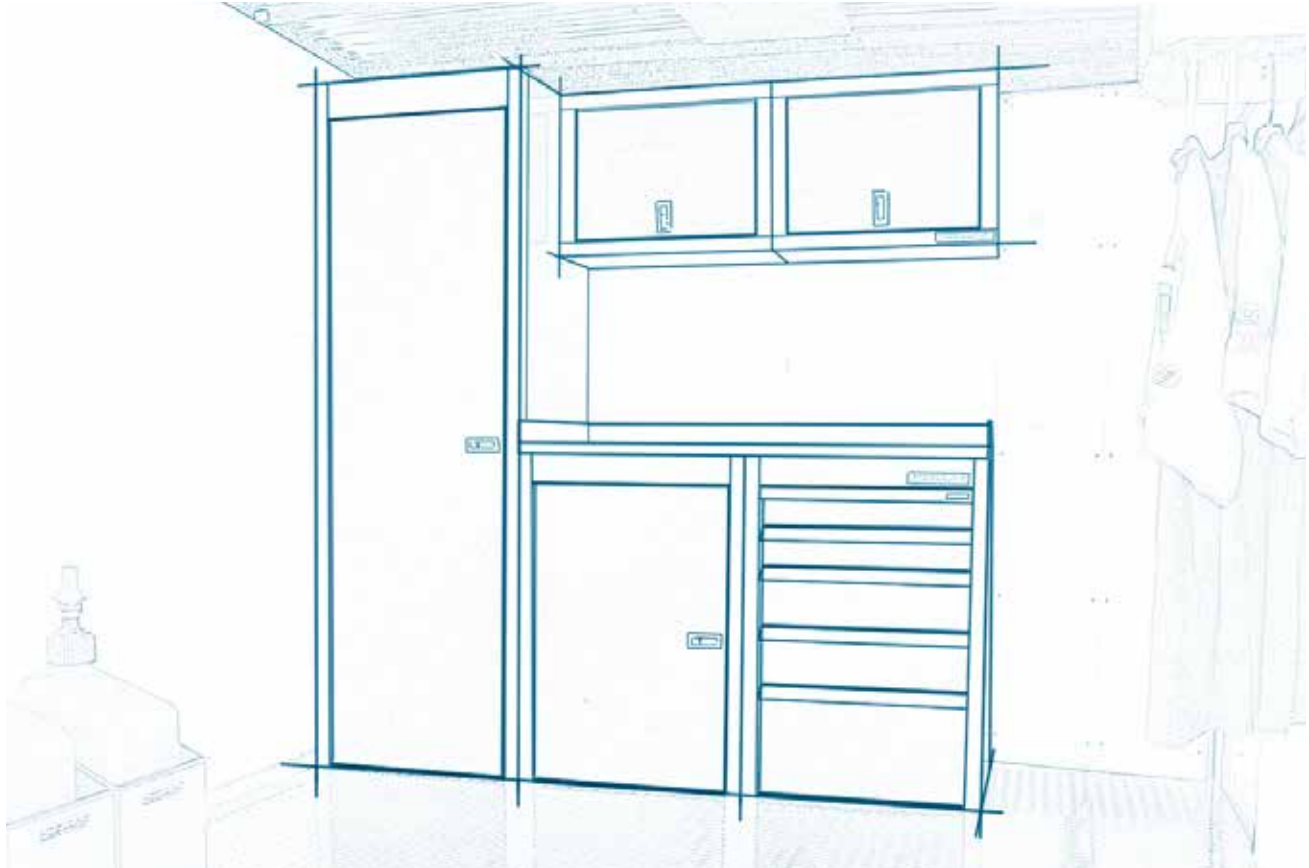


# MODULINE<sup>®</sup>

## SPORTSMAN II™ SERIES

### PRICE LIST



Moduline cabinets are **MODULAR**. That means each cabinet is a building block you can put them together in lots of different ways.

Assemble a cabinet layout that's right for you from the modular cabinet options listed, or choose one of our popular pre-configured layouts!

**MODULINE CABINETS ARE PROUDLY  
MADE IN THE USA**



Every Moduline drawer features our patented

## QuikDraw<sup>®</sup>

*Single Action Latch System*

- Drawers stay securely closed without locks.
- Unlatches effortlessly.
- Lift anywhere along the handle.
- Whisper-quiet operation.
- Mechanism doesn't sacrifice any drawer space.

All cabinets available in **WHITE ONLY** unless otherwise noted.



## SportsmanII™ Base Cabinet & Closet

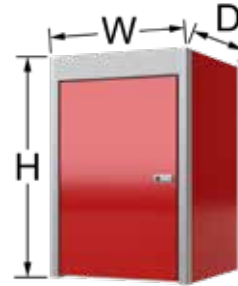
Cabinet	Height x Depth x Width	Price
Base	36" x 24" x 24"	\$495
Closet	75" x 24" x 24"	\$1,175

### Features & Specifications

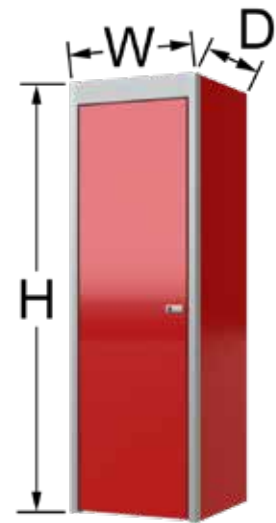
- Military-Grade Aluminum
- Double-Wall Door Construction
- Trigger Latch
- Continuous Hinge
- (1) Adjustable Shelf Included
- Pole Kit Included with Closet

### Accessories

Add <b>Extra Adjustable Shelf</b>	\$54 ea
Add <b>Adjustable Pull-Out Shelf</b>	\$174 ea



Base Cabinet



Closet

## All White Wheel Well Cabinet Single Door

Height x Depth x Width	Price
60" x 8" x 24"	\$595

### Custom Sizes Available

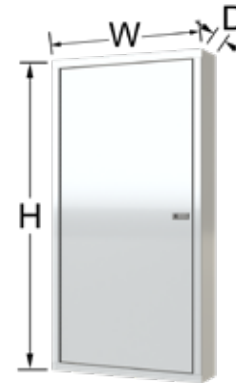
Cabinet uses unibody design (similar to Sportsman II Series overhead cabinets, except all white)

### Features & Specifications

- Military-Grade Aluminum
- Can be Installed with Left- or Right-Door Hinge
- Double-Wall Door Construction
- Trigger Latch
- Continuous Hinge
- (2) Adjustable Shelves Included

### Accessories

Add <b>Extra Adjustable Shelf</b>	\$24 ea
-----------------------------------	---------



All White Wheel Well Cabinet



Adjustable Shelf



Adjustable Pull-Out Shelf

## SportsmanII™ Countertops

Description	Price
24" Deep Aluminum	\$75 / ft

### Features & Specifications

- 1/8" Thick Military-Grade Aluminum
- Includes Back and Side Splash Guards

### Accessories

Add 24" Deep <b>Bench Mat</b>	\$20 / ft
-------------------------------	-----------



Bench Mat

# SportsmanII™ QuikDraw® Toolboxes

<b>Height x Depth x Width</b>	<b>Price</b>
36" x 24" x 24"	\$1,275

## Features & Specifications

- Military-Grade Aluminum
- QuikDraw® Single-Action Latch System

## Drawer Specifications

(2) 4" Tall, (2) 6" Tall & (1) 11" Tall Drawers

## Internal Drawer Space

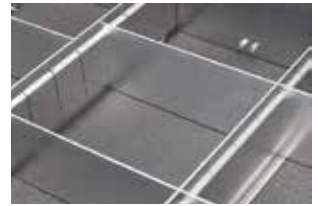
- 4" Tall Drawer — 3 ½" Internal Height
- 6" Tall Drawer — 5 ½" Internal Height
- 11" Tall Drawer — 10 ½" Internal Height
- 20 ¾" Internal Depth
- 18 ½" Internal Width

## Accessories

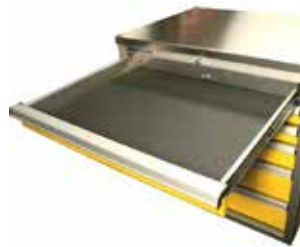
Add <b>Extreme Drawer Liner™</b>	\$56 (for top 4 drawers)
Add 4" Tall <b>Aluminum Dividers</b>	\$86 / drawer
Add <b>6 Extra Dividers</b>	+\$48 / set
Add 6" Tall <b>Aluminum Dividers</b>	\$96 / drawer
Add <b>6 Extra Dividers</b>	+\$48 / set
Add 4" Tall <b>Plastic Drawer Bins</b>	\$112 / drawer



QuikDraw® Toolbox



Aluminum Dividers



Extreme Drawer Liner™



Plastic Bins

# SportsmanII™ Wall Cabinets

<b>Height x Depth x Width</b>	<b>Price</b>
18" x 11" x 24"	\$330
18" x 11" x 32"	\$353
18" x 11" x 36"	\$386
18" x 11" x 24" Corner	\$475

## Features & Specifications

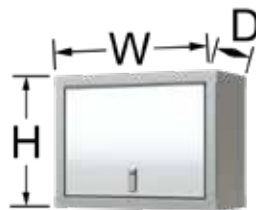
- Military-Grade Aluminum
- Double-Wall Door Construction
- Trigger Latch
- Continuous Hinge
- Lift-Up Door with Hydropneumatic Spring

## Accessories

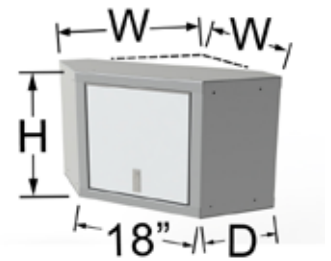
Add <b>Light Shield</b>	\$24 / ft
Add <b>Left Side Light Shield</b>	\$43 ea
Add <b>Right Side Light Shield</b>	\$43 ea
Add <b>Corner Light Shield</b>	\$49 ea
Add <b>Dimmable LED Lighting</b>	\$240

## LED Specifications

- (1) 16.4ft (5m) roll of LED strip
- 150 Lumens per Foot
- 5000K Color Temperature
- Wirelessly Dimmable with App



Wall Cabinet



Corner Wall Cabinet

Available in White & Red.



Light Shield & LED Lighting

# SportsmanII™ Combinations & V-Nose Kits

Visit [ModulineCabinets.com](http://ModulineCabinets.com) for complete combo information.

Trailer Combo	Width	Price	V-Nose Kit	Description	Width	Price
SPTC006-010	72"	\$2,334	SPV-72-TOP	Overhead Kit	72"-88"	\$1,075
SPTC006-020	72"	\$2,665	SPV-88-TOP	Overhead Kit	88"-101"	\$1,310
SPTC006-030	72"	\$3,097	SPV-72-BOT-N	Base Kit	72"-88"	\$1,475
SPTC006-040	72"	\$3,445	SPV-72-BOT-DU-N	Base Kit w/ Drawer	72"-88"	\$2,385
SPTC006-050	72"	\$3,114	SPV-88-BOT-N	Base Kit	88"-101"	\$1,545
SPTC006-060	72"	\$3,877	SPV-88-BOT-DU-N	Base Kit w/ Drawer	88"-101"	\$2,445
SPTC008-010	96"	\$3,583	SPV-72-KIT-N	OH + Base Kit	72"-88"	\$2,545
SPTC008-020	96"	\$4,363	SPV-72-KIT-DU-N	OH + Base Kit w/ Drawer	72"-88"	\$3,445
SPTC008-030	96"	\$3,840	SPV-88-KIT-N	OH + Base Kit	88"-101"	\$2,845
SPTC008-040	96"	\$4,620	SPV-88-KIT-DU-N	OH + Base Kit w/ Drawer	88"-101"	\$3,750
SPTC008-050	96"	\$4,237				
SPTC008-060	96"	\$5,017				
SPTC010-020	120"	\$4,758				
SPTC010-030	120"	\$5,538				

*Kits include instructions for supplying your own wooden countertop.*

## Countertop

Add **Solid .080" Aluminum Countertop**

Countertop	\$585
Oversized Item shipping	\$400

## Accessories

Visit [ModulineCabinets.com](http://ModulineCabinets.com) for complete accessory information.

### Helmet Holder

#### Description

Helmet Holder

#### Price

\$195



#### Features & Specifications

- 12" High x 14" Deep x 14" Wide
- Utilize Unused Wall or Door Space
- Built-in Rack for Hanging Uniforms, Goggles, etc.
- Includes Removable Foam Lining to Protect Helmet

### Fuel Jug Holder

#### Height x Depth x Width

Fuel Jug Holder

#### Price

\$75



#### Features & Specifications

- 15" High x 12" Deep x 12" Wide
- Mount to the Floor or Wall
- Neatly Store Fuel Jugs and Other Gear
- Fuel Jug Not Included

### Folding Workstation

#### Description

24" Wide Workstation

#### Price

\$325

#### Options

Add **Mobile Mounting Kit** \$45

Adding (2) Mounting Kits to your Trailer Interior and Exterior Lets You Easily Move the Workstation Outside for Raceday

#### Features & Specifications

- Instant Workbench When You Need It
- Compact 6 1/2" Depth When Closed
- (2) 4 1/2" Deep Shelves

Available in Red Only.



For complete Terms and Conditions please visit [www.modulinecabinets.com/terms](http://www.modulinecabinets.com/terms)  
Moduline reserves the right to revise product specification and prices.