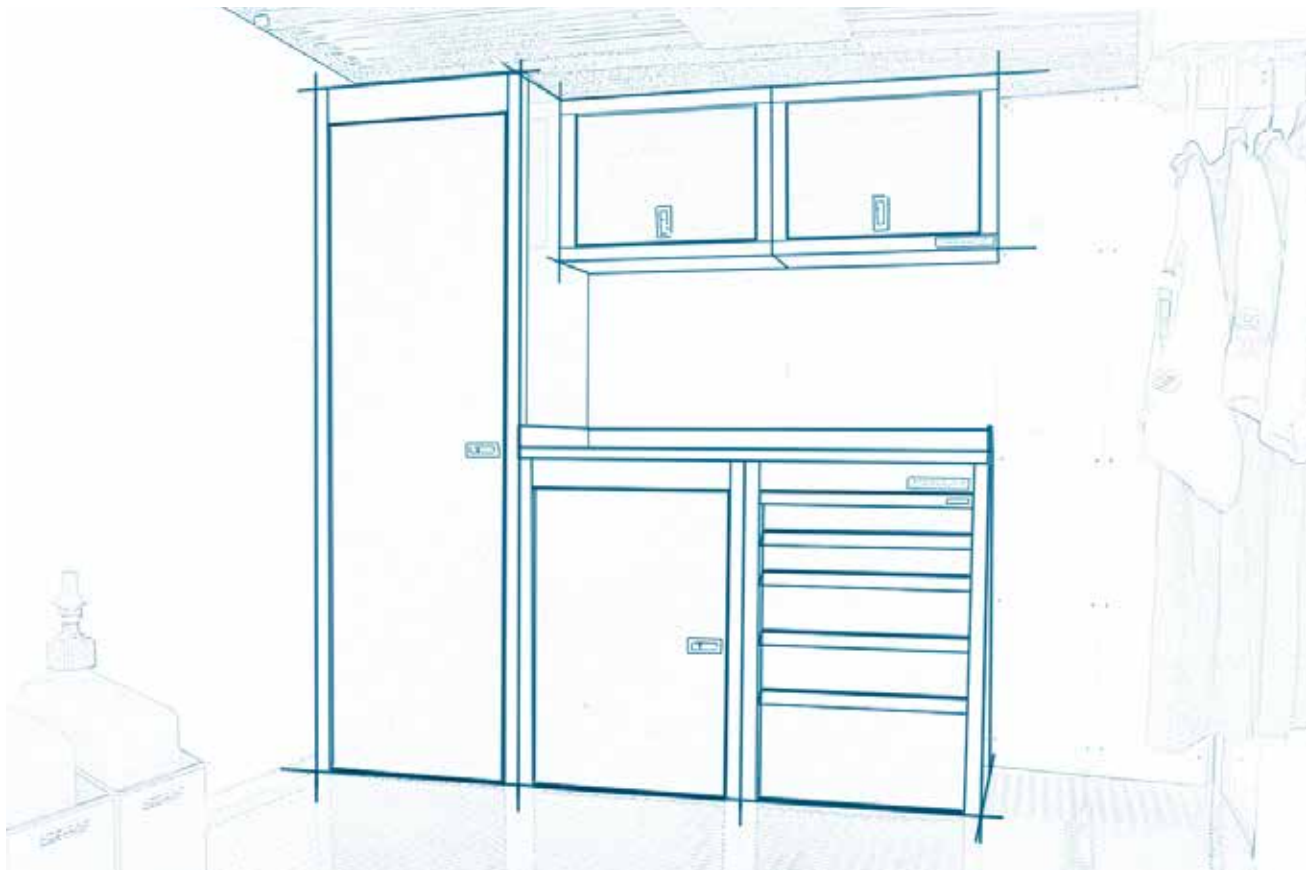


MODULINE[®] SPORTSMAN II™ SERIES

MOBILE APPLICATIONS TECHNICAL INFORMATION & PRICE LIST



Moduline cabinets are **modular**. That means each cabinet is a building block, and you can choose whichever cabinets you like and put them together in lots of different ways.

Cabinets Available in Red or White.



Every Moduline drawer features our patented

QuikDraw[®]

Single Action Latch System

- Drawers stay securely closed without locks.
- Unlatches effortlessly.
- Lift anywhere along the handle.
- Whisper-quiet operation.
- Mechanism doesn't sacrifice any drawer space.

SportsmanII™ Base Cabinet & Closet

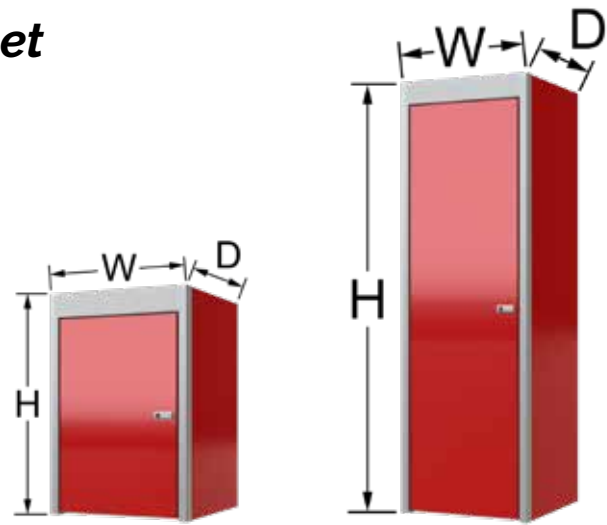
Cabinet	Height x Depth x Width	Price
Base	36" x 24" x 24"	\$495
Closet	75" x 24" x 24"	\$1,175

Features & Specifications

- Military-Grade Aluminum
- Double-Wall Door Construction
- Trigger Latch
- Continuous Hinge
- (1) Adjustable Shelf Included
- Pole Kit Included with Closet

Accessories

Add Extra Adjustable Shelf	\$49 ea
Add Adjustable Pull-Out Shelf	\$158 ea



Base Cabinet

Closet

All White Wheel Well Cabinet

Single Door

Height x Depth x Width	Price
60" x 8" x 30"	\$595

Custom Sizes Available

Cabinet uses unibody design (similar to Sportsman II Series overhead cabinets, except all white)

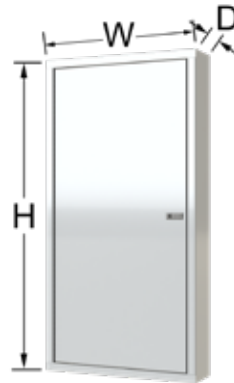
Features & Specifications

- Military-Grade Aluminum
- Can be Installed with Left- or Right-Door Hinge
- Double-Wall Door Construction
- Trigger Latch
- Continuous Hinge
- (2) Adjustable Shelves Included

Accessories (see Pages 16 & 17)

Add Extra Adjustable Shelf	\$24 ea
-----------------------------------	---------

Available in White.



All White Wheel Well Cabinet



Adjustable Shelf



Adjustable Pull-Out Shelf

SportsmanII™ Countertops

Description	Price
24" Deep Aluminum	\$68 / ft

Features & Specifications

- 1/8" Thick Military-Grade Aluminum
- Includes Back and Side Splash Guards

Accessories

Add 24" Deep Bench Mat	\$20 / ft
-------------------------------	-----------



Bench Mat

SportsmanII™ QuikDraw® Toolboxes

Height x Depth x Width	Price
36" x 24" x 24"	\$1,275

Features & Specifications

- Military-Grade Aluminum
- QuikDraw® Single-Action Latch System

Drawer Specifications

(2) 4" Tall, (2) 6" Tall & (1) 11" Tall Drawers

Usable Drawer Space

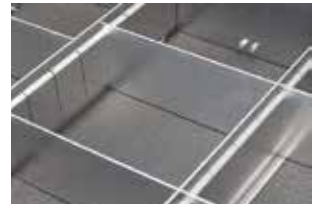
- 4" Tall Drawer = 3 ½" Height
- 6" Tall Drawer = 5 ½" Height
- 11" Tall Drawer = 10 ½" Height
- 20 ¾" Depth
- 18 ½" Width

Accessories

Add Extreme Drawer Liner™	\$56 (for top 4 drawers)
Add 4" Tall Aluminum Dividers	\$78 / drawer
Add 6 Extra Dividers	+\$42
Add 6" Tall Aluminum Dividers	\$87 / drawer
Add 6 Extra Dividers	+\$42
Add 4" Tall Plastic Drawer Bins	\$112 / drawer



QuikDraw® Toolbox



Aluminum Dividers



Extreme Drawer Liner™



Plastic Bins

SportsmanII™ Wall Cabinets

Height x Depth x Width	Price
18" x 11" x 24"	\$330
18" x 11" x 32"	\$353
18" x 11" x 36"	\$386
18" x 11" x 24" Corner	\$475

Features & Specifications

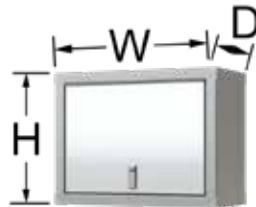
- Military-Grade Aluminum
- Double-Wall Door Construction
- Trigger Latch
- Continuous Hinge
- Lift-Up Door with Hydropneumatic Spring

Accessories

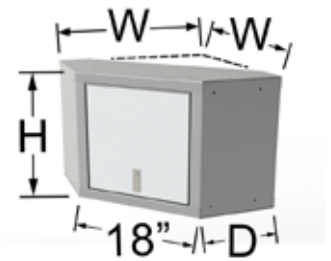
Add Light Shield	\$22 / ft
Add Left Side Light Shield	\$39 ea
Add Right Side Light Shield	\$39 ea
Add Corner Light Shield	\$45 ea
Add LED Lighting	\$30 / ft (Minimum 8')

LED Specifications

- (2) 2"x2" Modules per Foot
- 160 Lumens per Foot
- 6500K Color Temperature
- 120V 60 Watt Power Supply
- Up to 30' of LED Modules per Power Supply



Wall Cabinet



Corner Wall Cabinet



Light Shield & LED Lighting

SportsmanII™ Combinations & V-Nose Kits

Visit ModulineCabinets.com for complete combo information.

Trailer Combos	Width	Price	V-Nose Kits	Width	Price
SPTC006-010	72"	\$2,334	SPTC007-110	6" to 7'	\$2,850
SPTC006-020	72"	\$2,665	SPTC007-120	6' to 7'	\$2,960
SPTC006-030	72"	\$3,097	SPTC007-130	6' to 7'	\$3,754
SPTC006-040	72"	\$3,445	SPTC007-140	6' to 7'	\$3,864
SPTC006-050	72"	\$3,114	SPTC008-110	7'-4" to 8'-5"	\$3,156
SPTC006-060	72"	\$3,877	SPTC008-120	7'-4" to 8'-5"	\$3,326
SPTC008-010	96"	\$3,583	SPTC008-130	7'-4" to 8'-5"	\$4,060
SPTC008-020	96"	\$4,363	SPTC008-140	7'-4" to 8'-5"	\$4,230
SPTC008-030	96"	\$3,840			
SPTC008-040	96"	\$4,620			
SPTC008-050	96"	\$4,237			
SPTC008-060	96"	\$5,017			
SPTC010-020	120"	\$4,758			
SPTC010-030	120"	\$5,538			



Example V-Nose Kit

Accessories

Visit ModulineCabinets.com for complete accessory information.

Folding Workstation

Description	Price
24" Wide Workstation	\$325
44" Wide Workstation	\$595

Options

Add Mobile Mounting Kit	\$45
--------------------------------	------

Adding (2) Mounting Kits to your Trailer Interior and Exterior Lets You Easily Move the Workstation Outside for Raceday

Features & Specifications

- Instant Workbench When You Need It
- Compact 6 1/2" Depth When Closed
- (2) 4 1/2" Deep Shelves

Available in 4 Standard Colors.



Signature Black, Red, Moduline Blue & White.



Helmet Holder

Description	Price
Helmet Holder	\$195



Features & Specifications

- 12" High x 14" Deep x 14" Wide
- Utilize Unused Wall or Door Space
- Built-in Rack for Hanging Uniforms, Goggles, etc.
- Includes Removable Foam Lining to Protect Helmet

Available in White.



Oil Rack

Description	Price
Oil Rack	\$195
Oil Rack With Folding Tray	\$245



Features & Specifications

- 36" High x 5 1/2" Deep x 24 1/2" Wide
- Utilize Unused Wall or Door Space
- Neatly Store Bottles and Containers
- Holds Containers up to 4 1/2" Diameter

Oil Rack Available in Red & White. Oil Rack with Tray Available in White.



Fuel Jug Holder

Height x Depth x Width	Price
Fuel Jug Holder	\$75



Features & Specifications

- 15" High x 12" Deep x 12" Wide
- Mount to the Floor or Wall
- Neatly Store Fuel Jugs and Other Gear
- Fuel Jug Not Included

For complete Terms and Conditions please visit www.modulinecabinets.com/terms
Moduline reserves the right to revise product specification and prices.