

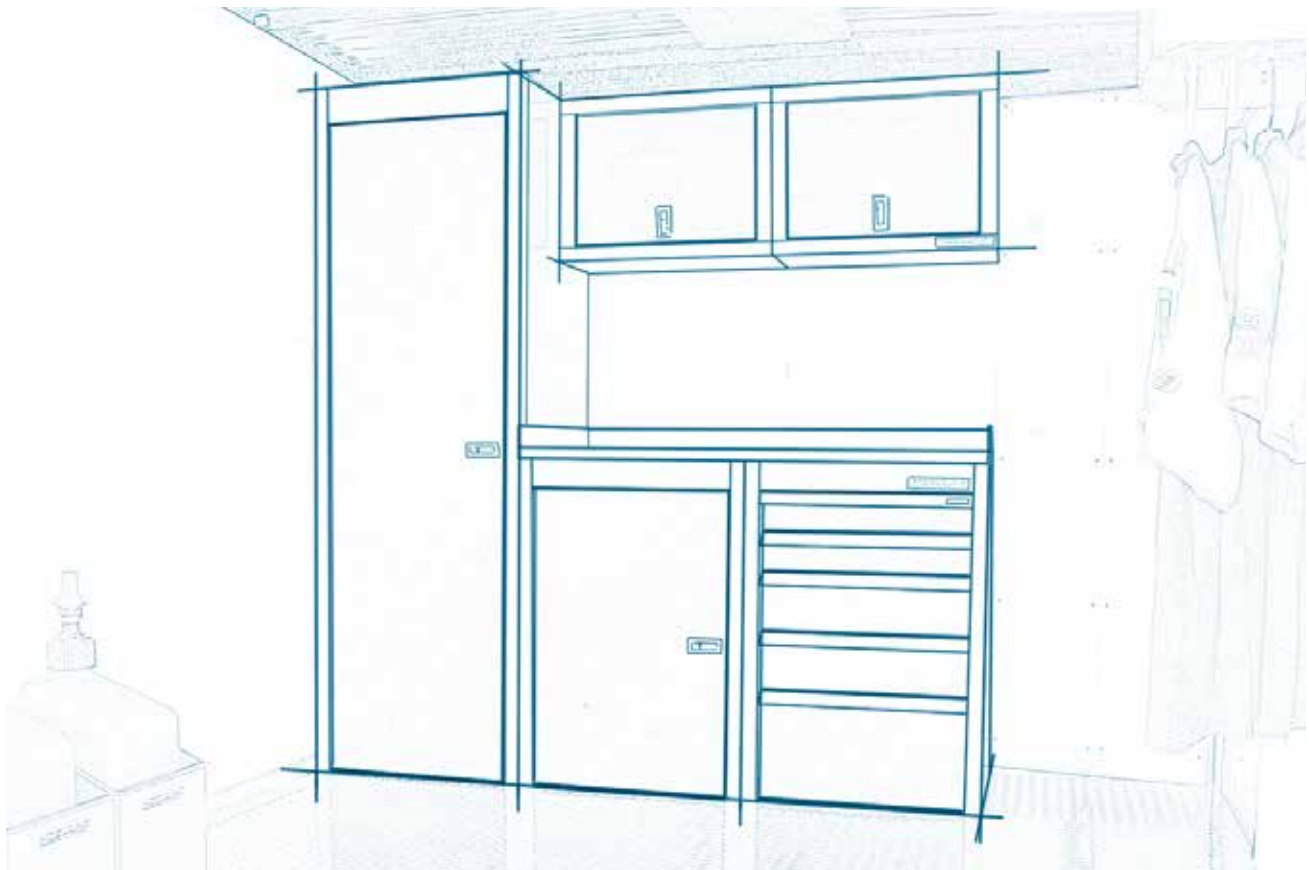
# MODULINE<sup>®</sup>

## SPORTSMAN II™ SERIES

### MOBILE APPLICATIONS

### TECHNICAL INFORMATION

### & PRICE LIST



Moduline cabinets are **modular**. That means each cabinet is a building block, and you can choose whichever cabinets you like and put them together in lots of different ways.

Cabinets Available in Red or White.



Every Moduline drawer features our patented

## QuikDraw<sup>®</sup>

*Single Action Latch System*

- Drawers stay securely closed without locks.
- Unlatches effortlessly.
- Lift anywhere along the handle.
- Whisper-quiet operation.
- Mechanism doesn't sacrifice any drawer space.

## SportsmanII™ Base Cabinet & Closet

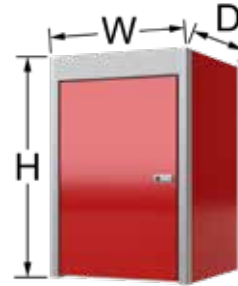
Cabinet	Height x Depth x Width	Price
Base	36" x 24" x 24"	\$450
Closet	75" x 24" x 24"	\$1,050

### Features & Specifications

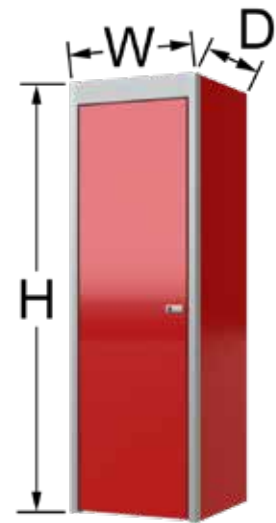
- Military-Grade Aluminum
- Double-Wall Door Construction
- Trigger Latch
- Continuous Hinge
- (1) Adjustable Shelf Included
- Pole Kit Included with Closet

### Accessories

Add <b>Extra Adjustable Shelf</b>	\$46 ea
Add <b>Adjustable Pull-Out Shelf</b>	\$135 ea



Base Cabinet



Closet

## All White Wheel Well Cabinet Single Door

Height x Depth x Width	Price
60" x 8" x 30"	\$595

### Custom Sizes Available

Cabinet uses unibody design (similar to Sportsman II Series overhead cabinets, except all white)

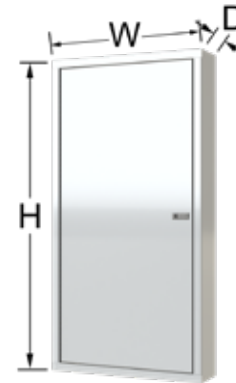
### Features & Specifications

- Military-Grade Aluminum
- Can be Installed with Left- or Right-Door Hinge
- Double-Wall Door Construction
- Trigger Latch
- Continuous Hinge
- (2) Adjustable Shelves Included

### Accessories (see Pages 16 & 17)

Add <b>Extra Adjustable Shelf</b>	\$23 ea
-----------------------------------	---------

Available in White.



All White Wheel Well Cabinet



Adjustable Shelf



Adjustable Pull-Out Shelf

## SportsmanII™ Countertops

Description	Price
24" Deep Aluminum	\$62 / ft

### Features & Specifications

- 1/8" Thick Military-Grade Aluminum
- Includes Back and Side Splash Guards

### Accessories

Add <b>Bench Mat</b>	\$20 / ft
----------------------	-----------



Bench Mat

# SportsmanII™ QuikDraw® Toolboxes

Height x Depth x Width	Price
36" x 24" x 24"	\$1,150

## Features & Specifications

- Military-Grade Aluminum
- QuikDraw® Single-Action Latch System

## Drawer Specifications

(2) 4" Tall, (2) 6" Tall & (1) 11" Tall Drawers

## Usable Drawer Space

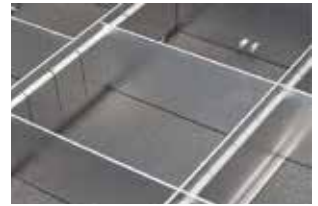
- 4" Tall Drawer = 3 1/2" Height
- 6" Tall Drawer = 5 1/2" Height
- 11" Tall Drawer = 10 1/2" Height
- 20 3/4" Depth
- 18 1/2" Width

## Accessories

Add <b>Extreme Drawer Liner™</b>	\$56
Add 4" Tall <b>Aluminum Dividers</b>	\$70 / drawer
Add <b>6 Extra Dividers</b>	+\$30
Add 6" Tall <b>Aluminum Dividers</b>	\$78 / drawer
Add <b>6 Extra Dividers</b>	+\$30
Add 4" Tall <b>Plastic Drawer Bins</b>	\$106 / drawer



QuikDraw® Toolbox



Aluminum Dividers



Extreme Drawer Liner™



Plastic Bins

# SportsmanII™ Wall Cabinets

Height x Depth x Width	Price
18" x 11" x 24"	\$295
18" x 11" x 32"	\$315
18" x 11" x 36"	\$345
18" x 11" x 24" Corner	\$420

## Features & Specifications

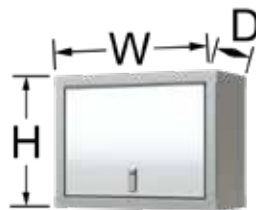
- Military-Grade Aluminum
- Double-Wall Door Construction
- Trigger Latch
- Continuous Hinge
- Lift-Up Door with Hydropneumatic Spring

## Accessories

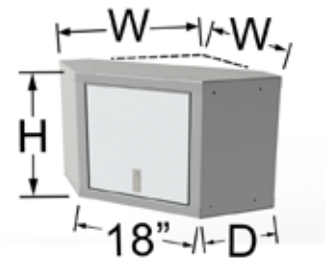
Add <b>Light Shield</b>	\$22 / ft
Add <b>Left Side Light Shield</b>	\$39 ea
Add <b>Right Side Light Shield</b>	\$39 ea
Add <b>Corner Light Shield</b>	\$45 ea
Add <b>LED Lighting</b>	\$27 / ft (Minimum 8')

## LED Specifications

- (2) 2"x2" Modules per Foot
- 160 Lumens per Foot
- 6500K Color Temperature
- 120V 60 Watt Power Supply
- Up to 30' of LED Modules per Power Supply



Wall Cabinet



Corner Wall Cabinet



Light Shield & LED Lighting

# SportsmanII™ Combinations & V-Nose Kits

Visit [ModulineCabinets.com](http://ModulineCabinets.com) for complete combo information.

Trailer Combos	Width	Price	V-Nose Kits	Width	Price
SPTC006-010	72"	\$2,197	SPTC007-110	6" to 7"	\$2,170
SPTC006-020	72"	\$2,494	SPTC007-120	6' to 7'	\$2,269
SPTC006-030	72"	\$2,832	SPTC007-130	6' to 7'	\$3,083
SPTC006-040	72"	\$3,178	SPTC007-140	6' to 7'	\$3,183
SPTC006-050	72"	\$2,860	SPTC008-110	7'-4" to 8'-5"	\$2,405
SPTC006-060	72"	\$3,532	SPTC008-120	7'-4" to 8'-5"	\$2,560
SPTC008-010	96"	\$3,328	SPTC008-130	7'-4" to 8'-5"	\$3,320
SPTC008-020	96"	\$4,028	SPTC008-140	7'-4" to 8'-5"	\$3,469
SPTC008-030	96"	\$3,528			
SPTC008-040	96"	\$4,228			
SPTC008-050	96"	\$3,996			
SPTC008-060	96"	\$4,635			
SPTC010-020	120"	\$4,378			
SPTC010-030	120"	\$5,078			



Example V-Nose Kit

## Accessories

Visit [ModulineCabinets.com](http://ModulineCabinets.com) for complete accessory information.

### Folding Workstation

Description	Price
24" Wide Workstation	\$325
44" Wide Workstation	\$398

#### Options

Add <b>Mobile Mounting Kit</b>	\$45
--------------------------------	------

Adding (2) Mounting Kits to your Trailer Interior and Exterior Lets You Easily Move the Workstation Outside for Raceday

#### Features & Specifications

- Instant Workbench When You Need It
- Compact 6 1/2" Depth When Closed
- (2) 4 1/2" Deep Shelves

Available in 4 Standard Colors.



Signature Black, Red, Moduline Blue & White.

### Fuel Jug Holder

Height x Depth x Width	Price
Fuel Jug Holder	\$75



#### Features & Specifications

- 15" High x 12" Deep x 12" Wide
- Mount to the Floor or Wall
- Neatly Store Fuel Jugs and Other Gear
- Fuel Jug Not Included

### Helmet Holder

Description	Price
Helmet Holder	\$195



#### Features & Specifications

- 12" High x 14" Deep x 14" Wide
- Utilize Unused Wall or Door Space
- Built-in Rack for Hanging Uniforms, Goggles, etc.
- Includes Removable Foam Lining to Protect Helmet

Available in White.



### Oil Rack

Description	Price
Oil Rack	\$155
Oil Rack With Folding Tray	\$195



#### Features & Specifications

- 36" High x 5 1/2" Deep x 24 1/2" Wide
- Utilize Unused Wall or Door Space
- Neatly Store Bottles and Containers
- Holds Containers up to 4 1/2" Diameter

Oil Rack Available in Red & White. Oil Rack with Tray Available in White.



For complete Terms and Conditions please visit [www.modulinecabinets.com/terms](http://www.modulinecabinets.com/terms)  
Moduline reserves the right to revise product specification and prices.