

# ***SPORTSMAN II*<sup>TM</sup>**

## **V-Nose Kit Installation Instructions**



Read these instructions thoroughly before installation and keep for future reference.

### **DISCLAIMER:**

PLEASE BE AWARE THAT THIS KIT IS DESIGNED TO BE ADJUSTABLE TO WORK WITH A WIDE RANGE OF TRAILERS. MODIFICATION WILL BE REQUIRED TO TAILOR-FIT THESE CABINETS TO YOUR PARTICULAR TRAILER DIMENSIONS. YOU WILL NEED TO CREATE A TEMPLATE FOR BOTH THE COUNTERTOP AND OVERHEAD BOTTOM, AND BE ABLE TO CUT THOSE ALUMINUM PARTS TO YOUR TEMPLATES. YOU MUST ANCHOR THE OVERHEAD CABINETS TO THE TOP OF YOUR TRAILER. IT IS THE INSTALLER'S RESPONSIBILITY TO PROVIDE ADEQUATE CEILING SUPPORT. THIS MAY REQUIRE ADDITIONAL CUSTOM BRACING AND IS NOT PROVIDED BY MODULINE IN THIS KIT.

## TABLE OF CONTENTS

---

2	Check Your Delivery	5	Installing Your Cabinets
2	Tools You'll Need	6	Installing Your Overhead Bottom
2	Hardware We Supply	7	Installing Your Countertop
3	Part List	7	Caring For Your Cabinets
4	Before You Begin		

## CHECK YOUR DELIVERY

---

When your order is delivered remove the packing material and thoroughly inspect all cabinets for damage. Every cabinet is inspected and free of defects when it leaves our facilities. If you believe your order has been damaged, sign the bill of lading as Possible Concealed Damage or Damage and contact your Moduline sales representative.

## TOOLS YOU'LL NEED

---

- |  |                    |
|--|--------------------|
| ○ #2 Phillips Screwdriver  | ○ Carpentry Square |
| ○ 3/8", 7/16" & 3/4" Wrenches or Ratchets                                      | ○ Box Cutter       |
| ○ Cordless Drill/Driver with #2 Phillips bit                                   | ○ Masking Tape     |
| ○ Metal-Cutting Jigsaw (or other tool to cut the countertop & overhead bottom) | ○ Microfiber Cloth |
| ○ Tape Measure   | ○ Glass Cleaner    |
| ○ Laser Level  | ○ Aluminum Polish  |
|  | ○ Safety Goggles   |

Because each installation is unique, Moduline does not supply wall mounting hardware.

## HARDWARE WE SUPPLY

---

- A. **1/4-20 x 3/4" Hex Bolts w/ Nuts** ..... for Cabinets & Components
- B. **1/4-20 x 1/2" Button-Head Bolts w/ Nuts**..... for Overhead Bottom
- C. **10-32 x 1/2" Socket-Head Bolts**..... for Fillers
- D. **10-24 x 3/8" Self-Tapping Screws** ..... for Floor-Mounting Brackets
- 1" Wide Double-Sided Tape** ..... for Countertops
- Horseshoe Shims** ..... for Leveling

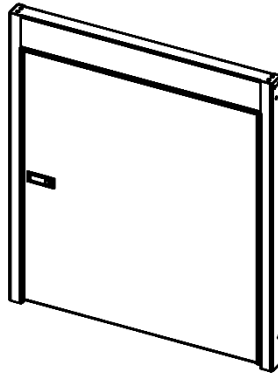
## PART LIST

---

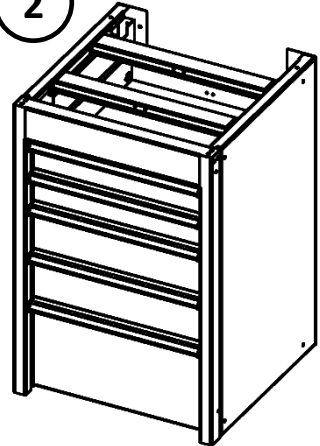
Use this list as a reference to identify the components in your V-Nose Kit. Sizes are not specified here.

1. Base Face Front
2. Toolbox
3. Base Filler Kit
4. Base Floor-Mounting Bracket
5. Toolbox Floor-Mounting Bracket
6. Overhead Face Front
7. Overhead Filler Kit
8. Overhead Bottom Kit
9. Overhead Wall-Mounting Bracket
10. Countertop
11. Countertop Wall-Mounting Bracket

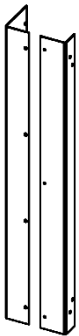
1



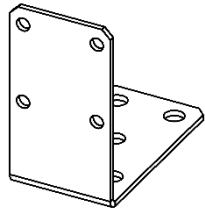
2



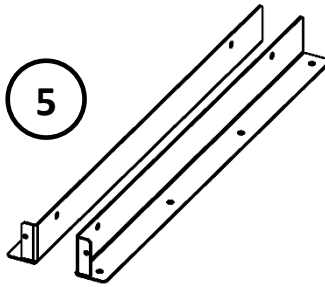
3



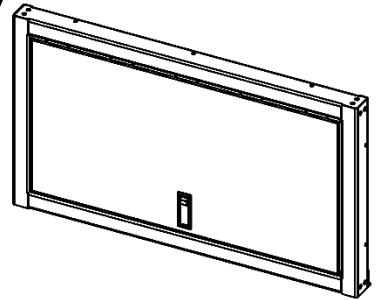
4



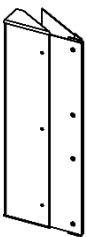
5



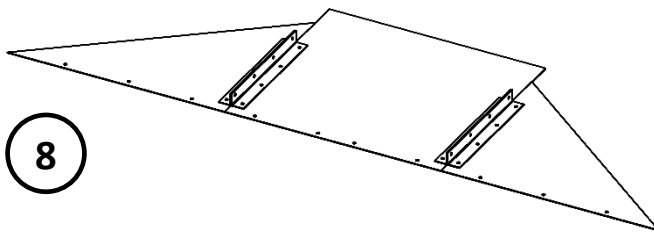
6



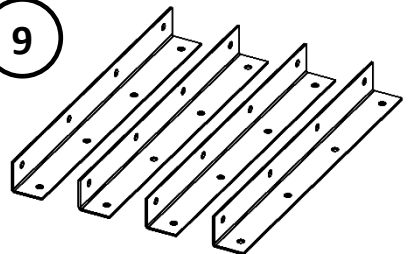
7



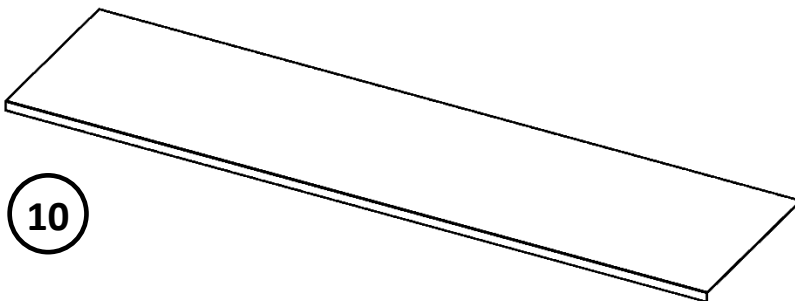
8



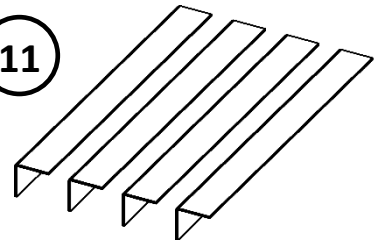
9



10



11



## BEFORE YOU BEGIN

---

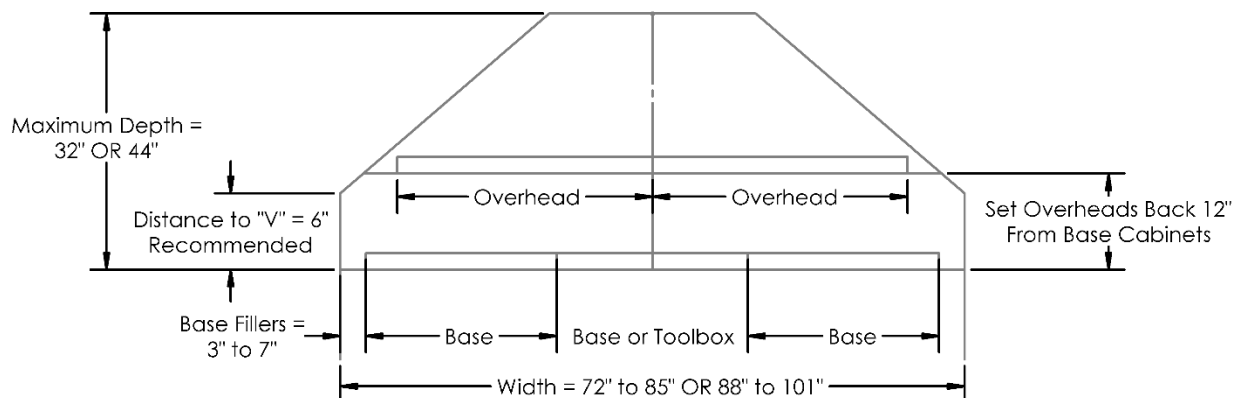
Make sure the vehicle is stationary and under its own load on a level surface.

Unbox your cabinets and set them aside. You can use the cardboard packaging to protect the floor from damage as you move your cabinets around. **Do not remove** the protective vinyl from your cabinets until you've finished assembling them. You'll have to peel it back in places as you install the cabinets, but leave it on where possible to safeguard against accidental scratches.

Level floors and walls are important for proper installation. No construction is going to be perfectly flat and you'll need to shim your cabinets to keep them square. Use a level to identify the high point in the floor where your cabinets will go. You should plan to start here when installing your cabinets to make shimming them easier.

Mark where the base cabinets will go in your trailer. A good rule of thumb is to put the base cabinets 6" before the "V" starts on the wall, and set the overheads back 12" from the bases (**see below**). You may need to adjust these dimensions to accommodate your trailer. Just make sure that you've got enough space left behind the overheads to give you adequate storage.

The overhead face fronts are designed to be supported by the ceiling, **not** by the walls. Fasten them directly to a ceiling joist if possible. Otherwise, you will need to add your own supports to accommodate your trailer.

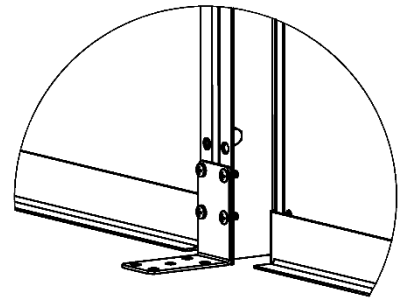


## INSTALLING YOUR CABINETS

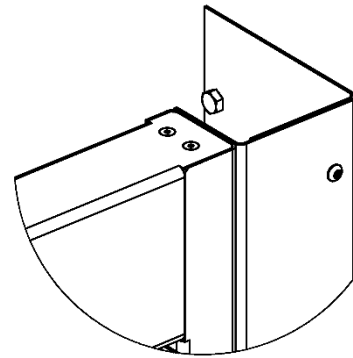
---

### Install the base cabinets.

1. Fasten the base face fronts together with ¼-20 hex bolts.
2. Attach the base floor-mounting brackets to the fronts with 10-24 self-tapping screws.
3. Attach the front base fillers at both ends with ¼-20 hex bolts.
4. Center the cabinets in the trailer and put the adjustable filler angles **behind** the front fillers, then fasten them to the wall with appropriate hardware.
5. Drill through the pilot holes in the front filler and secure them together using 10-32 socket-head screws.
6. Anchor the cabinets to the floor with appropriate hardware, shimming as necessary.



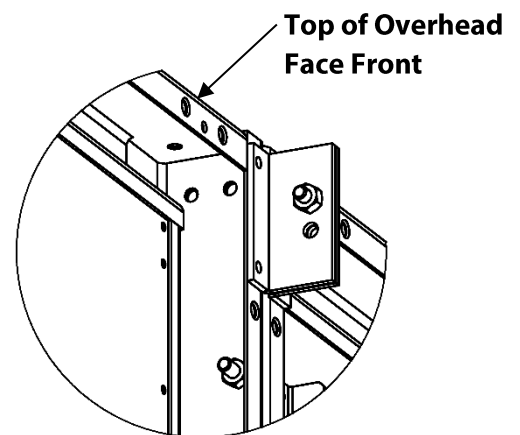
*Floor-mounting bracket installed between two bases.*



*Base filler attached to a base face front with adjustable filler behind.*

### Install the overhead face fronts.

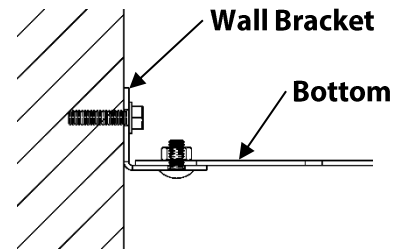
1. Fasten the overhead face fronts together with ¼-20 hex bolts.
2. Attach the front overhead fillers at both ends with ¼-20 hex bolts.
3. Center the cabinets on the ceiling, making sure the adjustable fillers will reach the walls. Anchor the frames to the ceiling using appropriate hardware. Fasten them directly to a ceiling joist if possible. Otherwise, you will need to add your own supports to accommodate your specific trailer.
4. Put the adjustable filler angles **behind** the front fillers, then fasten them to the wall with appropriate hardware.
5. Drill through the pilot holes in the front filler and secure them together using 10-32 socket-head screws.



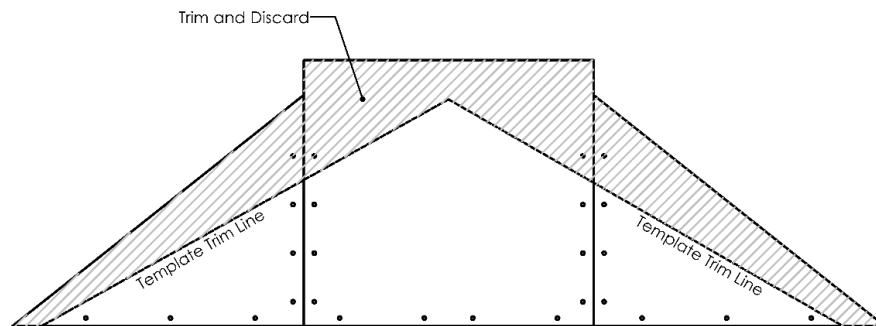
*Overhead face fronts bolted together.*

## INSTALLING YOUR OVERHEAD BOTTOM

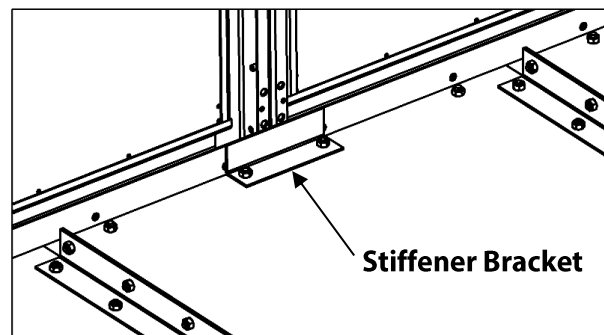
1. Attach the overhead wall-mounting brackets around the “V” walls at the same height as the rails on the back of the overheads. The overhead bottom will rest on these so it’s important that they’re level. We suggest mounting the wall brackets with the angle pointed up so that the mounting hardware will be in the cabinet.



2. Create a template for the overhead bottom out of cardboard. You can create the template as one big piece, or in sections; just make sure they line up properly at the seams. If you want to be even more accurate, tape craft paper (or some other stiff paper) around the cut edges and use that to trace the finer details. The more accurate your template, the better your final result will be, so take your time!
3. Lay the template on the bottom panels and transfer over the trim lines. Assembling the bottoms together with the support rails first can help keep them from sliding around.
4. Trim the bottom panels to size. When trimming, err on the side of making the panels too large. You can always remove more material, but you can’t add it back if you trim too much.



5. Assemble the panels together with the support rails. Use ¼-20 button-head bolts to attach the rails to the bottom panels and use ¼-20 hex bolts to attach the rails together.
6. Shift the overhead bottom into place. Depending on your trailer, it may be easier to leave one of the panels separate and only bolt them together once they’re in place.
7. Check that the bottom fits well all the way around. You’ll be bolting it to the rails, so it’s ok to have a little play. You may find that you need to go back and trim more in places.
8. Once you’re happy with the fit, place the short stiffener brackets inside, at the joints between the cabinets. Secure the overhead bottom to the cabinet rails using ¼-20 button-head bolts.
9. Drill up through the holes at each end of the overhead wall-mounting brackets and secure the overhead bottom to them using ¼-20 button-head bolts.



*Stiffener bracket installed at the joint between two cabinets.*

## INSTALLING YOUR COUNTERTOP

---

1. Attach the countertop wall-mounting brackets around the wall at the same height as the bases. The countertop will rest on these so it's important that they're level.
2. Create a template for the countertop out of cardboard. Tape craft paper (or some other stiff paper) around the cut edges and use that to trace the finer details. It's more important that the countertop fits tight to the wall than the overhead bottom, so really take your time and be as accurate as possible.
3. Lay the template on the countertop and transfer over the trim lines.
4. Trim the countertop to size. When trimming, err on the side of making the countertop too large. You can always remove more material, but you can't add it back if you trim too much.
5. Dry fit the countertop to make sure you like how it fits before using any adhesive. Cover any exposed cabinet surfaces that could be scratched while moving the countertop around.
6. Apply double-sided tape to the tops of base cabinets, tool boxes and wall-mounting brackets. Remove the backing from the tape to expose the adhesive. Spray the tape with glass cleaner. This will temporarily reduce the tackiness of the tape and make installation easier. The glass cleaner will dry shortly after installation and the tape will form a solid bond.
7. Set the countertop in place. Apply even pressure to the countertop to smooth it out.

## CARING FOR YOUR CABINETS

---

Remove any remaining protective vinyl once installation is complete. A little maintenance will keep your cabinets looking brand new.

To clean the cabinets and remove fingerprints use glass cleaner and a microfiber cloth.

To clean the countertops wipe with a microfiber cloth and a solution of water and a few drops of dish soap. Dry thoroughly. Use stainless steel cleaner to remove fingerprints and make the countertop shine.

**Avoid** using the following on your cabinets:

- ⊗ Abrasive Cleaners
- ⊗ Chemical Solvents
- ⊗ Strong Detergents
- ⊗ Cleaners with Bleach
- ⊗ Furniture Polish